



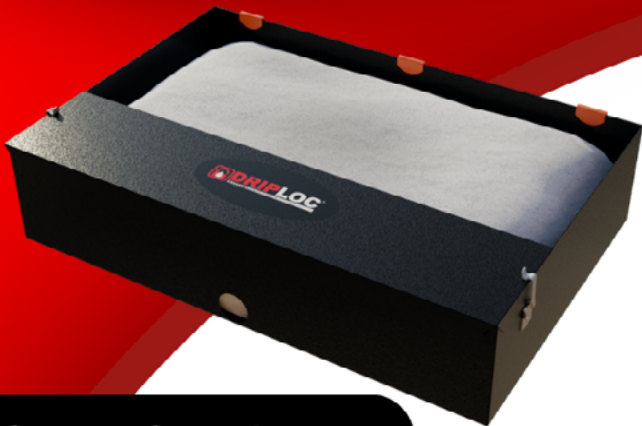
**Stinger Duct Cleaners**



**Drain Adapters**



**Griploc Magnets**



**Grease Containment**

# **DRIPLOC** CATALOG Version 7.3



**Hinge Kits for Every Fan**

## TAP. NAVIGATE. ORDER.

Click to Jump - Instant navigation to any category  
Live SKU Links - View product pages from the catalog

# Table of Content

- 2 **About **DRIPOC****
- 3-12 **Stingers & Pressure Washer Parts**
- 13-17 **Hinges, Handles & Adapters**
- 18-23 **Grease Containment Systems**
- 24-28 **Replacement Filters**
- 29 **Access Panel**
- 30-33 **Magnets & Tools**
- 34-36 **Soak Tanks & Soap**
- 37-38 **Spill Prevention & Cleanup**
- 39 **How To Order**
- 40 **Contact**
- 41-42 **Index**

 **DRIPLOC**

# Your Partner in Commercial Kitchen & Rooftop Safety

Reliable tools and grease  
containment systems  
for Hood Cleaners and  
restaurants.



Driploc products handle the tough demands of kitchen exhaust and rooftop grease control. Whether you clean multiple sites or manage a single kitchen, you'll find equipment that improves safety, reduces mess, and meets NFPA codes—all in one catalog.

It's a daily challenge to keeping commercial kitchens and rooftops clean and safe. That's why our tools are built for durability, ease of use, and consistent results. Driploc is your solution for cleaning ducts & hoods, containing grease on rooftops, or looking to get your restaurant up-to-code.



# STINGER

## STINGER DUCT CLEANERS

Professional Duct Cleaners for professional hood cleaners

### KEY FEATURES

- Impact Resistant Cage
- Fewer Ductwork Snags
- Wash arm Speed Control
- Long-Life Swivels
- Rebuildable Swivels

### PROFESSIONAL DUCT CLEANERS

STINGER Duct Cleaners last longer, clean deeper, offer speed control to protect the swivel and are easy to work on in the field. They are professional tools for professional hood cleaners.



### STINGER Ultimate Hood Cleaning Combo Pack

All-in-one kit built for pros—combining power, precision, and durability for faster, deeper hood cleaning. Variable speed control, drop-proof cage, and time-saving tools make it the ultimate setup for efficiency on every job.

Includes:  
6" & 3" Duct Cleaners with hose, spray tip, and head speed setter • GRIPLOC Super Magnets (12-pack with case) • T Spray Nozzle

**SKU: AA0800**



### STINGER Duct Cleaner Combo Pack

Complete professional setup for efficient, high-performance hood cleaning. Built for durability, precision, and easy maintenance.

Includes:  
3" Duct Cleaner Spray Tip • 6" Duct Cleaner with 20' hose and Quick Connect • Head Speed Setter Tool

**SKU: AA0900**





**STINGER 6" Variable Speed Duct Cleaner**

Engineered for high-efficiency hood cleaning with adjustable RPM for consistent, high-pressure coverage and reduced maintenance.

Includes:  
6" Duct Cleaner with Variable Speed Control and next-gen impact-resistant Stinger Cage

**SKU: AA1100**



**STINGER 6" Variable Speed Duct Cleaner with 20' Hose & Quick Connect**

Professional-grade cleaner built for powerful, consistent performance in vertical or horizontal duct systems.

Includes:  
6" Variable Speed Duct Cleaner • 20' Hose with Quick Connects • Next-gen Impact-Resistant Cage

**SKU: AA1110**



**STINGER 6" Variable Speed Duct Cleaner Replacement Head**

Ready-to-install replacement head attaches directly to the swivel for quick maintenance and reliable performance.

Includes:  
Replacement Head • Upper & Lower High-Pressure Water Seals

Note: Fits 6" cages with 1/8" low-profile spray tips. Spray tips not included.

**SKU: AA1120**



**STINGER 6" Variable Speed Duct Cleaner Cage**

Ready-to-install replacement head attaches directly to the swivel for quick maintenance and reliable performance.

Includes:  
Replacement Head • Upper & Lower High-Pressure Water Seals

Note: Fits 6" cages with 1/8" low-profile spray tips. Spray tips not included.

**SKU: AA1130**





**Stinger 3" Variable Speed Duct Cleaner**

Compact, high-performance cleaner designed for precision hood and duct cleaning with consistent spray coverage and durability.

Includes:  
3" Variable Speed Duct Cleaner • Impact-Resistant Cage for Protection and Easy Maintenance

**SKU: AA1200**



**Stinger 3" Variable Speed Duct Spray Tip with Inline Quick Coupler**

Pre-assembled cleaner for precise, high-pressure cleaning of hood tracks and plenums. Compact, durable, and easy to connect.

Includes:  
3" Variable Speed Duct Cleaner • Stainless Steel Inline Quick Coupler • Pre-Installed Spray Tip

**SKU: AA1205**



**Stinger 3" Variable Speed Duct Cleaner with 20' Hose & Quick Connect**

Compact cleaner designed for easy transition between wand and hose cleaning, ideal for vents, plenums, and ductwork.

Includes:  
3" Variable Speed Duct Cleaner • 20' Hose with Quick Connects • Impact-Resistant Cage

**SKU: AA1210**



**STINGER 3" Variable Speed Duct Cleaner Replacement Head**

Ready-to-install replacement head designed for fast attachment and long-lasting, high-pressure performance.

Includes:  
Replacement Head • Upper & Lower High-Pressure Water Seals  
Note: Fits 3" cages using low-profile 1/8" MEG body spray tips (sold separately).

**SKU: AA1220**





**Stinger 3" Variable Speed Duct Cleaner Cage**

Durable, impact-resistant molded cage built to replace metal housings and protect your duct spinner from job site abuse.

Includes:

Two-Piece Molded Cage • Three Heavy-Duty Rubber O-Rings

Features: Drop-proof, quick access for maintenance, and precision fit for STINGER spinners.

**SKU: AA1230**



**Stinger Head Speed Setter Tool**

Tool quickly sets wash arm pitch with built-in head stop and adjustable arm stop for consistent settings every time.

**SKU: AA1250**



**STINGER Stainless Steel Duct Spinner Swivel 3/8" x 3/8" (Includes Upper & Lower Seals)**

Aluminum, highly durable swivel designed for reliable, high-pressure hood cleaning performance.

Specs:

3/8" F x 3/8" M • 100–300 RPM • 250–5000 PSI • 3–6 GPM • 33–210 °F

**SKU: AA1300**



**STINGER Stainless Steel Duct Spinner Swivel 3/8" F X 3/8" M**

All-stainless swivel with steel core handles 100–300 RPM, 250–5000 PSI, and 3–6 GPM for lightweight, long-lasting durability.

**SKU: AA1305**





### Stinger Swivel Seal/Nozzle Replacement Kit

Replacement Seal/Nozzle kit that fits both the 3/8" & 1/4" model STINGER swivel.

**SKU: AA1310**



### Stinger Swivel Replacement Bearing Kit

Replacement bearing kit, fits both the 3/8" & 1/4" model STINGER swivel.

**SKU: AA1320**



### Stinger Wash Arm Head

Made of stainless steel and is proprietary to fit only Stinger brand swivels.

**SKU: AA1321**



### Stinger 3" Wash Arm Set

Durable stainless steel arms fit most duct spinners, providing a versatile, long-lasting replacement option.

**SKU: AA1322**



**Stinger 6" Wash Arm Set**

Durable stainless steel arms fit larger duct spinners, offering a versatile, long-lasting replacement option.

**SKU: AA1323**



**Stinger Duct Cleaner Head Banjo Bolt Kit**

Redesigned bolts with taller heads provide a stronger grip and prevent loosening during operation.

Includes:  
(2) Bolts • (4) Copper Washers

**SKU: AA1325**



**Stinger Duct Cleaner Copper Washer, 10 Pack**

Seals adjustable arm duct cleaners securely and fits both STINGER and Mosmatic heads.

Includes:  
(10) Copper Washers per Pack

**SKU: AA1330**



**Stinger Duct Cleaner Low Profile Stainless Steel 1/8" Meg Body Spray Nozzle /Tips Kit**

Restore lost pressure and performance with precision-engineered, low-profile 1/8" MEG spray tips.

Includes:  
(2) Nozzles — #1503 and #0003  
Note: Required for 3" duct spinners to clear cage walls.

**SKU: AA1400**





**AA1410 Quick Connect Inline Filter 1/4\"/>**

Inline high-pressure filter with quick disconnect, stainless mesh screen, and durable brass/stainless construction.

**SKU: AA1410**



**50' Stiff Double-Wire Hose with In-Line Screen Quick Connect**

Rigid double-wire hose with in-line screen and quick-connect ends for tough duct runs that require push-rod stability.

**SKU: AA1425**



**50' Stiff Double-Wire Hose with In-Line Screen Quick Connect**

Durable 5800 PSI hose stiffens under pressure for use as a push rod, ideal for vertical or horizontal duct cleaning.

Includes:

1/2" Diameter Hose • 1/4" In-Line Screen Quick Connect × 3/8" M Fitting

**SKU: AA1430**



**Mini Spinner**

Compact, heavy-duty surface cleaner ideal for tight spaces and deep cleaning of tough buildup.

Specs:

100–300 RPM • 250–5000 PSI • 3–6 GPM • 33–210 °F

Features: Solid steel body with welded legs for maximum durability.

**SKU: AA1500**





**Mini Spinner Wash Arm 16"**

Durable, over-curved spray bar minimizes overspray and connects easily to standard fittings.

Specs:  
Fits 1/4" NPT Male Pipe • 1/8" FPT Nozzle Ports

**SKU: AA1575**



**Mini Spinner Polyurethane Caster Wheel**

Durable, non-marking wheel built for smooth movement and long life in demanding commercial environments.

Specs:  
Thermoplastic Gray Tread • Polypropylene Core • 275 lb Load Capacity

**SKU: AA1580**



**Stinger Stainless Surface Cleaner Swivel 1/4" F X 1/4" M**

Compact, corrosion-resistant swivel built for reliable high-pressure performance in hood cleaning systems.

Specs:  
1/4" F Inlet x 1/4" M Outlet • 100–300 RPM • 250–5000 PSI • 3–6 GPM • 33–210 °F

**SKU: AA1600**



**Stinger Stainless Surface Cleaner Swivel 1/4" M Adapter Nut**

Compact, corrosion-resistant swivel built for reliable high-pressure performance in hood cleaning systems.

Specs:  
1/4" F Inlet x 1/4" M Outlet • 100–300 RPM • 250–5000 PSI • 3–6 GPM • 33–210 °F

**SKU: AA1605**





**1/8"-15 Degree Meg Body Spray Tips Set**

1/8 Male Threaded Spray Tips are 15 degrees – Available sizes #2.0,#2.5,#3.0,#3.5,#4.0.

**SKU: AA1610**



**Stinger Duct Cart Mounting Bracket**

Quickly adapts 3" or 6" duct cleaners for use with Mosmatic carts using existing hardware for easy installation.

Includes:  
Mounting Bracket Compatible with Mosmatic Hardware

**SKU: AA1700**



**Stinger Chimney Rod Adapter Fitting**

Adapter fitting lets chimney rods attach quickly and securely — tough component built for high-pressure systems.

**SKU: AA1690**



**Pressure Wash Hose - Single Wire, Gray 50' Rough Skin**

Flexible, non-marking gray hose built for durability and smooth handling in high-pressure cleaning.

Specs:  
3/8" M × 3/8" M • 4000 PSI • 275 °F Max • Rough Skin Finish

Note: Quick connects not included.

**SKU: AA1775**





**Pressure Wash Hose - 2-Wire, Gray 50' Rough Skin Non Marking**

Heavy-duty, non-marking gray hose designed for high-pressure cleaning with superior strength and flexibility.

Specs:

3/8" M × 3/8" M • 6000 PSI • 275 °F Max • Rough Skin Finish

Note: Quick connects not included.

**SKU: AA1780**



**T-Spray Nozzle**

Compact nozzle designed to reach tight track and plenum areas for precise, effective cleaning in vent hoods and equipment.

Features:

Easy to attach • Ideal for confined or hard-to-access areas

**SKU: NN1300**



**O'Rings Viton Brown-1/4" - 25 Per Package**

High-temperature, chemical-resistant O-rings ensure a secure seal and long-lasting performance in power washer fittings.

Specs:

Withstands up to 400 °F • Tear & Abrasion Resistant • Fits 1/4" Quick Couplers

**SKU: NN1325**



**O'Rings Viton Brown-3/8" - 25 Per Package**

Durable, chemical-resistant O-rings provide a tight seal and long service life in high-temperature power washer fittings.

Specs:

Withstands up to 400 °F • Tear & Abrasion Resistant • Fits 3/8" Quick Couplers

**SKU: NN1350**





## GREASE DRAIN ADAPTERS

Make the grease flow  
where it should go

### KEY FEATURES

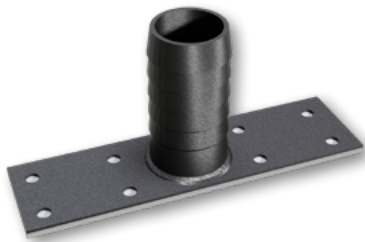
- Slip & Fit, No Clamps
- Straight, 90 & 45 Degree
- Easy Install
- Direct Grease to Containment
- Route Where You Need
- Mix & Match

### MAXIMIZE YOUR CONTAINMENT

Driploc's Slip & Fit adapters fit together without fittings or clamps.

They are easily cut and can be used to route grease from fans to containment systems so the grease flows where it should go.

The heat-absorbent black plastic keeps grease fluid and flowing.



#### Original Adapters

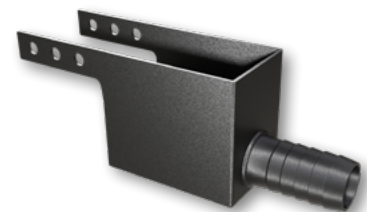
Directs grease flow into the containment system by bypassing the fan base, replacing missing or damaged spouts.

Specs:

1-1/4" Diameter • Formable Flat Sides for Custom Fit

Note: May require hose extensions; compatible with DRIPLC Pail Filter System.

**SKU: DD1100**



#### Horizontal Drain Adapter

Extends and redirects grease flow from the fan base into the containment system for improved drainage and control.

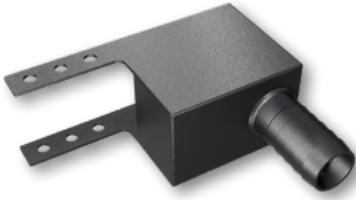
Specs:

1-1/4" Diameter • Connects to "U" Spout or PVC Hose (hose not included)

Note: May require hose extensions; compatible with DRIPLC Pail Filter System.

**SKU: DD1200**





### Vertical Drain Adapter

Redirects grease from the fan base into the containment system, adding vertical drainage length and improving flow.

**Specs:**

1-1/4" Diameter • Connects to "U" Spout or PVC Hose (hose not included)

Note: May require hose extensions; compatible with DRIPLoc Pail Filter System.

**SKU: DD1300**



### Fan Drain Adapter - 90 Degree

Redirects grease efficiently from the fan port to the containment system, ideal for precise flow control in tight or complex setups.

**Features:**

Heat-absorbing material prevents grease solidification

Right-angle design channels grease exactly where needed

Dual-sized openings allow trimming and pairing with 12" or 45° adapters

**SKU: DD1410**



### 12" Fan Drain Adapter

Directs grease efficiently from the fan port to the containment system, maintaining smooth flow and easy customization.

**Features:**

Heat-absorbing black material prevents grease solidification

Dual-sized openings allow trimming and mixing with 45° or 90° adapters

No clamps required — cut, press, and connect for a custom setup

**SKU: DD1405**



### Fan Drain Adapter - 45 Degree

Provides precise grease redirection from the fan port to the containment system, offering flexibility in drainage setups.

**Features:**

Heat-absorbing black material prevents grease solidification

45° angle ensures smooth, directed grease flow

Dual-sized openings allow trimming and pairing with 12" or 90° adapters

**SKU: DD1415**





## TYPE 1 HINGE KIT

Fast, affordable exhaust fan  
hinge kit solution

### KEY FEATURES

- Affordable Hinge Kit
- Fast Install
- Lockout Capability
- Slip-On Hinge
- NFPA 96 Compliant

### SOLUTIONS FOR EVERY FAN

Driploc's fast, affordable hinge kit you can install by yourself in minutes.

The Type 1 Hinge Kit allows easy cleaning access and keeps exhaust fans up to code with NFPA 96 regulations.



### Deflector Shield

Redirects grease from the fan base into the containment system, improving flow and collection efficiency.

Note: Included with every DRIPLOC Rack System.



### Type #1S Exhaust Fan Hinge Kit

Heavy-duty hinge kit installs in minutes, provides safe fan access for cleaning, and helps prevent costly damage.

#### Features:

Meets NFPA 96 fire code requirements

Safety Stop prevents fan from falling forward

Allows full access for cleaning and inspection

#### Includes:

(2) Hinges • (2) Safety Chains • (12) Screws • (4) Nuts & Bolts

**SKU: DD1500**

**SKU: JJ1205**





## TYPE 2 HINGE KIT

Fast, affordable exhaust fan  
hinge kit solutions

### KEY FEATURES

- Affordable Hinge Kit
- Fast Install
- Adjust to fit any curb
- Slip-On Hinge
- NFPA 96 Compliant

### SOLUTIONS FOR EVERY FAN

Driploc's fast, affordable, adaptable hinge kit you can install by yourself in minutes.

The Type 2 Hinge Kit adapts to a wide range of fan curb sizes and configurations. Keep exhaust fans up to code with NFPA 96 regulations.



### Type #2S Exhaust Fan Hinge Kit

Versatile hinge kit installs quickly, adapts to angled or low-clearance curbs, and provides safe fan access for cleaning.

Features:

Meets NFPA 96 fire code requirements

Side-mount brackets support angled curbs up to 45°

Expandable upper hinge assembly for added support

Reinforced face cap plate for aging or large fan bases

Includes:

Hinges • Safety Chains • Screws for Installation

**SKU: JJ1405**



### Type #2S Hinge Upper Assembly Kit

Add extra support to larger fan bases by expanding your existing hinge assembly for greater stability and strength.

Includes:

(1) Upper Hinge Leaf • (1) Hinge Cap Plate • Lock Nuts & Bolts

**SKU: JJ1407**





### 3' Safety Chain (20 Pack)

Provides essential backup protection if a hinge stop fails, preventing fan damage and improving job site safety.

Includes:

(20) Double-Loop Safety Chains • Each 3' in Length

**SKU: JJ1450**



### “S” Exhaust Fan Safety Lift Handles

Provide secure lift points to safely raise and lower exhaust fans during cleaning and inspections. These handles help prevent injuries from sharp edges and extend the life of the fan by reducing wear during handling.

Includes:

(2) “S” Safety Handles

**SKU: JJ1650**



### Type 1S Exhaust Fan Hinge & Model-S Safety Handle Combo Pack

Brings exhaust fans up to NFPA 96 code while improving safety and access. Hinges allow easy fan cleaning and inspection, and safety handles provide secure lift points to prevent injuries and extend fan life.

Includes: 1 set of Type 1S Hinges, 1 set of Model-S Safety Handles

**SKU: JJ1750**



# GREASE CONTAINMENT SYSTEMS

Rooftop grease containment rack systems for restaurants and commercial kitchen exhaust fans

## KEY FEATURES

- Easy to install
- Meets NFPA 96 Standards
- Environmentally/EPA friendly
- Maintain Roof Warranty
- Reduce Fire Hazards
- Reduce Slip Hazards

## SOLUTIONS FOR EVERY ROOF

Driploc has Low Volume Systems, 4" Rack Systems, 7" Rack Systems and even larger so you can pick the system that contains the grease flow your kitchen produces.

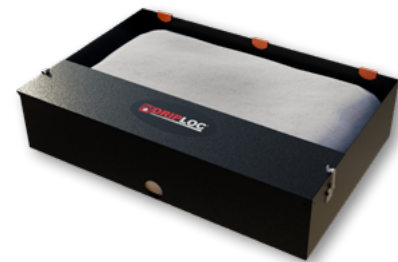


### Low Volume Grease Containment System

A cost-effective solution for exhaust fans with minimal grease output. The LV Box includes a custom grease pillow that's easy and inexpensive to replace after installation, making it ideal for low-volume cooking operations.

Includes: LV Box (4" x 18" x 8") with custom DRIPLoc filter pillow installed.

**SKU: BB1100**



### 4" Grease Containment System

A versatile, budget-friendly solution for standard-volume exhaust fans. The built-in drain allows high-volume water flow, and after installation, only the grease pillow needs replacing during routine cleanings.

Includes: 4" Rack System (18" x 12" x 4"), mounting bracket, deflector shield, and (1) absorbent pillow.

**SKU: BB1200**





**4" Grease Containment System  
(No Filters)**

Versatile 4" rack system with a built-in drain offers affordable grease containment for standard exhaust fans — filter sold separately.

**SKU: BB1205**

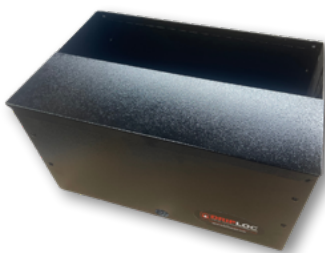


**7" Grease Containment System**

High-capacity 7" rack system provides durable grease containment for heavy-output exhaust fans. Built-in drain allows high water flow, and replaceable absorbent pillows make maintenance easy.

- Includes:
- Mounting bracket
  - Deflector shield
  - (2) Absorbent pillows
  - Dimensions: 18" x 12" x 7"

**SKU: BB1300**



**7" Grease Containment System  
(No Filters)**

High-capacity 7" rack system with built-in drain offers durable grease containment for heavy-output fans — filters sold separately.

**SKU: BB1305**



**Supreme Grease Containment System**

Engineered for exhaust fans with extreme grease output, the Supreme Box System holds over twice the absorbent capacity of the 7" rack. It installs directly on the rooftop and is ideal for heavy-duty cooking operations.

- Includes:
- (2) Supreme absorbent pillows
  - Deflector shield
  - Mounting hardware
  - Dimensions: 24" x 17" x 7"

**SKU: BB1400**

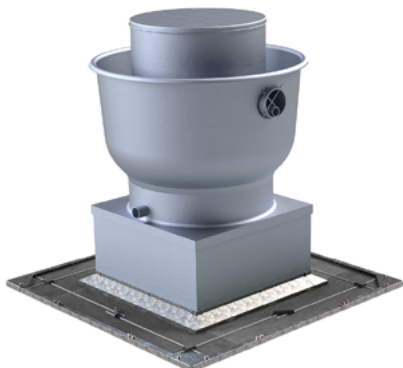




**Supreme Grease Containment System Curb Mounting Bracket**

Provides a stable, level platform for the Supreme Grease Containment System on sloped or uneven rooftops. Essential for safely supporting the system's weight — which can exceed 60 lbs. when saturated — and ensuring reliable performance

**SKU: BB1405**

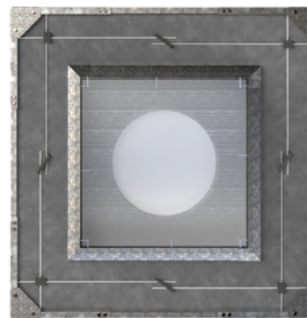


**360 Grease Containment System Model #4424/27-65**

Provide 12" of reliable rooftop grease protection with the RT 360 System. The expandable Flex Frame fits fan curbs from 27" to 65" in diameter, delivering full-perimeter containment and easy installation.

Includes:  
 Complete Flex Frame system  
 (4) 12" coverage filter sections  
 All required mounting hardware

**SKU: BB1550**

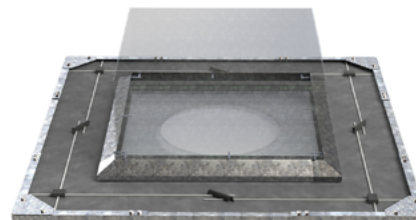


**360 Grease Containment System Model #4424**

Revolutionize rooftop protection with 24" of full-perimeter grease containment around the exhaust fan. The expandable Flex Frame fits fan curbs from 3" to 34" in diameter and installs in about an hour.

Includes:  
 (4) 24" x 58" five-layer oil-only filters  
 Complete installation hardware and components

**SKU: BB1500**



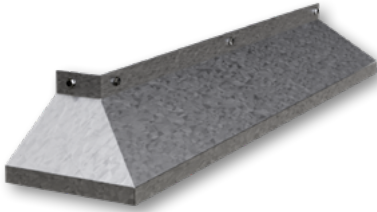
**360 Grease Containment System Model #3312/16-41**

Delivering 12" of rooftop grease protection, the RT 360 System features an expandable Flex Frame that fits fan curbs from 16" to 41" in diameter. Designed for quick, 1-hour installation, this system surrounds the fan curb with continuous containment and high-performance filter media.

Includes:  
 Complete Flex Frame system  
 (8) 12" x 58" 5-layer filter sections  
 All required mounting hardware

**SKU: BB1575**





**360 Deflector System Kit**

Directs dripping grease and oil straight into your rooftop containment system, reducing rooftop mess. Compatible with all DRIPLOC RT 360 systems and many OEM units.

Includes:

- (4) Deflector pieces
- Hardware for fan curbs 12"–43"

**SKU: BB1595**



**Drip Edge 360 Grease Containment System Model #1832**

Provides complete 4" wide, 360° leak protection around the fan curb using DRIPLOC SUPERWASH FILTER technology. Installs in minutes with a flexible frame that adapts to various curb sizes.

Features:

- Fits fan curbs 18"–32"
- 4-layer oil-only absorbent filter with fire-retardant materials
- Pre-filter layer holds grease and offers UV protection

**SKU: BB1600**



**DRIPLOC**

**360 SYSTEMS**

**KEY FEATURES**

- Flex Frame Design
- No Measuring / Cutting
- 360° Grease Protection
- High Capacity Absorption
- Separates Oil & Water
- Non-Combustible
- Affordable Solution

**MAXIMIZE GREASE PROTECTION**

Driploc's 360° Systems are easy to install. The Flex Frame corner and side rails slide inside each other. They adjust to different size fan curbs without measuring or cutting.

These systems can fit curbs from 20" to 58".

Filter material is a five-layer, heavy duty oil absorbent that captures grease.





**DRIPLOC**

**(877) 374-7562**

**info@driploc.com**

**www.driploc.com**





**Drip Edge 360 Grease Containment System Model #3250**

Provides 4" wide, 360° leak protection around the fan curb with advanced DRIPLOC SUPERWASH FILTER technology. Installs quickly and adapts to a wide range of curb sizes.

**Features:**

- Fast installation with flexible frame design
- Pre-filter layer captures grease and offers UV protection
- Four heavy-duty oil-only absorbent layers made from fire-retardant material

**SKU: BB1605**



**Deluxe Wall Mount Grease Containment System**

Engineered for side-mounted exhaust fans, this system redirects displaced grease and wash water back into the DRIPLOC 7" Rack System to prevent spills and simplify cleanings.

**Includes:**

- Oversized Deflector Pan
- 21" W × 34" L Deflector Shield
- 7" Rack with (2) Absorbent Pillows
- 7" Rack Mounting Bracket

Note: Mounting screws not included.

**SKU: BB1700**



**ECONO WALL-MOUNT**

**Affordable grease containment solutions for wall-mounted exhaust fans**

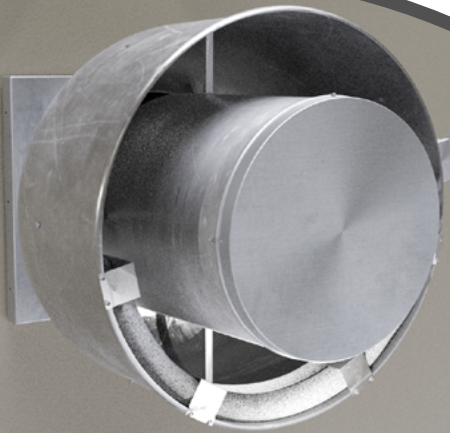
**KEY FEATURES**

- Affordable Solution
- Fast Install
- Encapsulates grease discharge
- Reduce Fire Hazards
- No Grease on Walls

**SOLUTIONS FOR EVERY FAN**

Driplac's Econo Wall-mount system is an affordable grease containment system for wall-mounted exhaust fans.

Help reduce fire hazards, keeps grease from running down the walls and is easy to install and maintain.





**Econo Wall Mount Grease Containment System**

A budget-friendly solution for wall-mounted exhaust fans, this system installs in minutes and captures grease in an absorbent sock to prevent leaks and spills.

Includes:

- (4) Mounting Clips
- (1) 9.5 ft Absorbent Grease Sock



**Standard Driploc Starter Pack**

An economical starter kit with essential components to outfit 1–2 restaurants — perfect for new customers or keeping inventory on hand.

Includes:

- (1) 7" Rack Grease Containment System
- (1) 4" Rack Grease Containment System
- (2) Type 1 Hinge Kits
- (2) Fan Access Clean-Out Ports
- (2) Bags of Sphag Absorbent

**SKU: BB1800**

**SKU: BB1900**



**Deluxe Starter Pack**

A comprehensive starter kit with everything you need to outfit multiple restaurants — ideal for new accounts or keeping essential inventory stocked.

Includes:

- (2) 4" Rack Grease Containment Systems • (2) 7" Rack Grease Containment Systems • (4) Low Volume Grease Containment Systems • (1) RT 360 #4412 Grease Containment System • (12) Standard Replacement Filters • (10) Low Volume Replacement Filters • (5) Fan Access Panels • (5) Type 1 Hinge Kits • (1) Type 2 Hinge Kit • (2) Bags of Sphag Absorbent

**SKU: BB1910**





## REPLACEMENT FILTERS

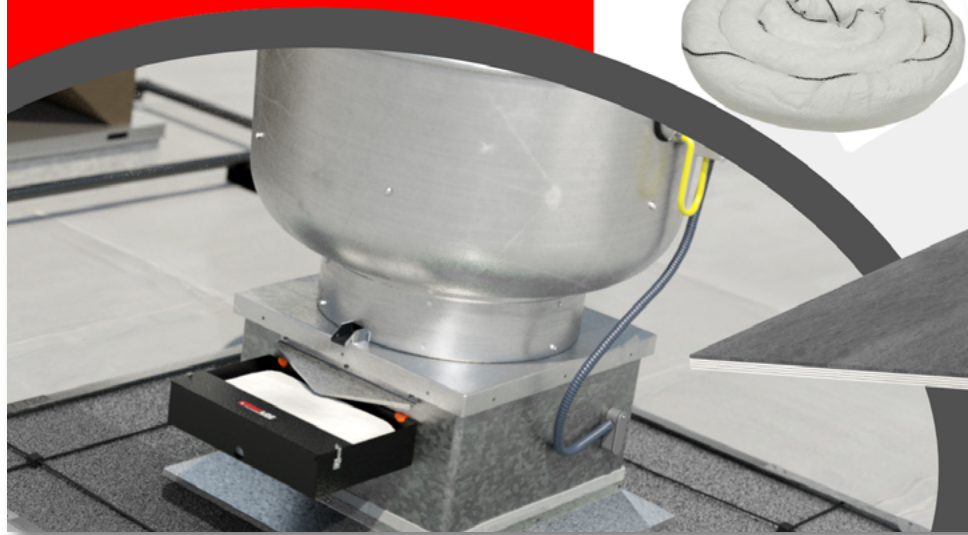
Replacement filters that protect commercial rooftop & keep compliance

### KEY FEATURES:

- Oil-only absorbent
- Protects rooftops
- EPA-friendly
- Custom fit
- Fire-retardant options
- Quick & easy replacement

### OIL ABSORPTION, WATER REPELLENCE

Driploc replacement filters protect commercial rooftops from grease and oil damage with advanced oil-only absorbent media that locks in fats, oils, and grease while repelling water. By preventing runoff, they help keep your business EPA compliant, and with multiple filter types available for every Driploc system, you can count on quick replacements and reliable protection after every cleaning.



(877) 374-7562

INFO@DRIPLOC.COM

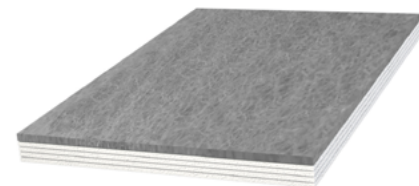
WWW.DRIPLOC.COM



### Oil Only Spagh Pillow Standard Filter

Non-leaching absorbent pillow fits 4" and 7" rack systems, catching and containing grease for cleaner filter changes.

**SKU: CC1000**

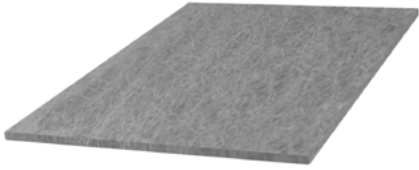


### Superwash Oil Only Poly 12" x 18" Standard Filter

Six-layer filter locks in oil while rejecting water, fitting 4" & 7" rack systems and retrofitting many OEM setups.

**SKU: CC1025**





### Standard Filter 12"x18" Self-Extinguishing Topper

Self-extinguishing topper protects and disperses grease evenly, then doubles as a wash pad to save time during cleaning.

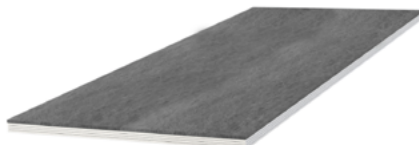
**SKU: CC1050**



### Oil Only Sphag Pillow Low Volume Filter

Non-leaching absorbent pillow fits low-volume systems or retrofits factory boxes, catching and containing grease spills.

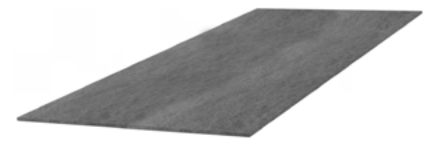
**SKU: CC1100**



### RT 360 System 24"x58" Filter

Five-layer oil-only filter fits RT 360 systems and retrofits many OEM units, capturing grease while rejecting water.

**SKU: CC1200**



### RT 360 System 24"x58" Self-Extinguishing Topper

Self-extinguishing topper layer that protects and evenly disperses grease into underlying filter media. Designed to fit RT 360 Model 4424 and many retrofit systems.

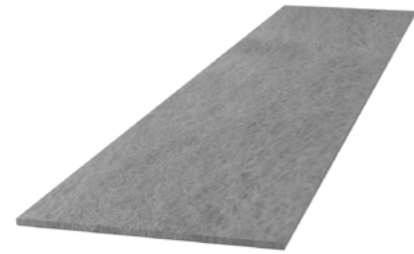
**SKU: CC1210**



### RT 360 System (2) 12"x58" Filter

Five-layer oil-only filter fits RT 360 systems and retrofits many OEM units, capturing grease while rejecting water.

**SKU: CC1250**



### RT360 System 12"x58" Self-Extinguishing Topper

Self-extinguishing topper protects and disperses grease evenly into absorbent layers, fitting RT 360 and many OEM systems.

**SKU: CC1260**



### Drip Edge 360 System 4"x54" Filter

Five-layer oil-only filter fits DRIP EDGE 360 systems and many OEM units, capturing grease while rejecting water.

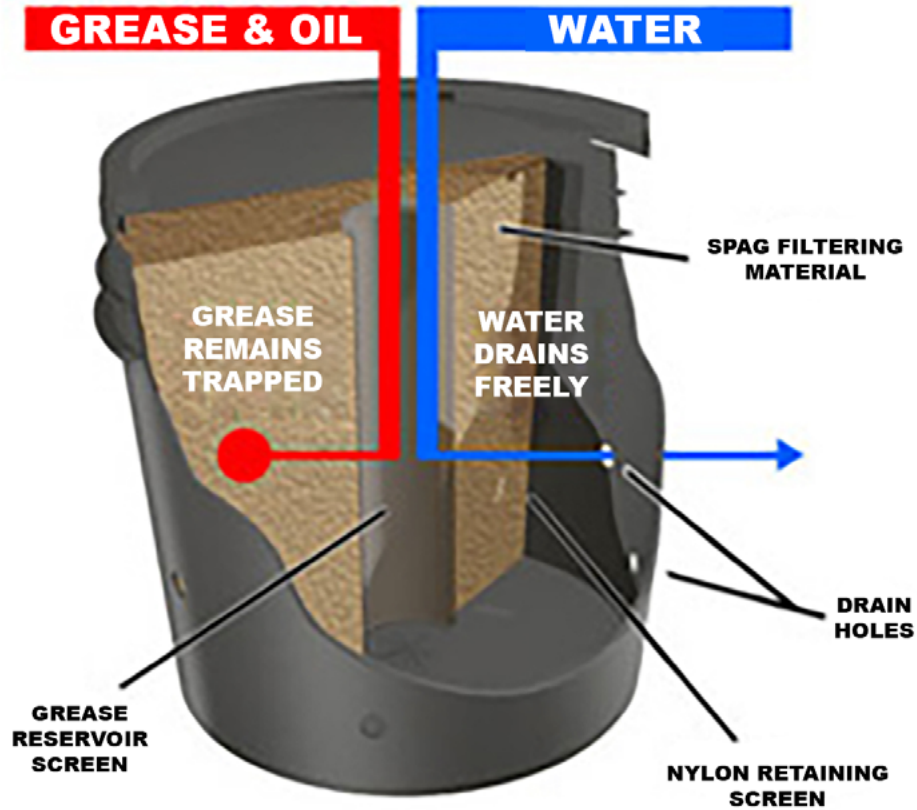
**SKU: CC1275**



### "Gutter Style" Oil Only Lay Flat Sphag Filter

Lay-flat oil-only filter replacement for grease gutter systems, using proprietary absorbent for versatile spill control.

**SKU: CC1300**



**Supreme Oil Only Spagh Filter**

High-capacity oil-only filter designed for Supreme grease containment systems, holding over 6 lbs of absorbent.

**SKU: CC1600**



**Oil Only Spagh Pail Filter**

Pail filter system captures grease while letting water drain, adapting to many fan styles for quick, clean replacement.

**SKU: CC1700**





### Oil Only 3"x9.5' Sphag Boom Sock

Absorbent boom sock fits wall-mount kits or wraps fan bases, capturing hard-to-contain grease leaks for easy disposal.

**SKU: CC1800**



### Oil Only Poly Boom Filter 5"x10'

UV-resistant absorbent boom links together to capture oil or fuel, floats when saturated, and resists snags and lint.

**SKU: CC1825**



### Exhaust Fan Breather Port Filter QTY - 100

Slides over breather pipes to contain leaks and absorb grease

**SKU: CC1900**



### Oil Only Absorbent Mat - Full Roll - 150'x24"

Durable, low-lint mat absorbs oil and fuels—not water—ideal for spills, leaks, and high-traffic areas with easy-tear perforations.

**SKU: CC2100**



## ACCESS PANELS

Access exhaust fan blades for properly cleaned fans

### KEY FEATURES

- Proper access to clean fan blade
- Code Compliance NFPA 96
- Reduce fan noise and vibration
- Prevent premature belt wear
- Prolong exhaust fan life
- Double seal design

### MAXIMIZE YOUR CLEANING

You can't clean what you can't see!

Driploc's Fan Access Panels allow access to exhaust fan blades for deeper and proper cleaning.

Once installed, the access panel easily snaps in and out of place.



### Dual Seal Access Panel

Dual-seal fan panel resists grease, installs in minutes, and provides safe NFPA 96-compliant access for inspection and cleaning.

**SKU: LL1200**



# MAGNETS & TOOLS



## Griploc Super Magnets

Powerful magnetic pairs that act as an extra set of hands during hood cleaning and other tasks, each delivering ~75 lbs of pull force through stainless steel.

Includes one "+" and one "-" magnet per pair  
Ideal for hanging plastic sheeting or securing equipment  
Durable tool built to last for years of use

**SKU: NN1100**

## DRIPLOC

### SUPER MAGNETS

Hang plastic fast and easy with super strong, super protected Driploc magnets.

#### KEY FEATURES

- 70lbs Pulling Force
- Aluminum Housing
- Easy Release
- Positive / Negative Pairs
- Long Lasting
- Hang Plastic Fast

#### PROFESSIONAL HOOD CLEANING TOOLS

Driploc magnets are encased in an aluminum housing to protect the magnets over time and also provide leverage to release them. Make hanging plastic a snap!

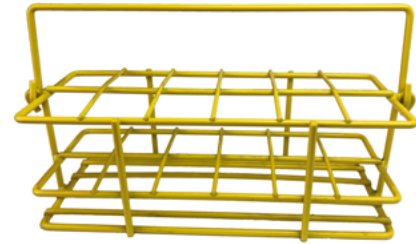




**Griploc Super Magnet 8 Pack Carrier Magnets**

Griploc Magnet Carrier holds 8 pairs of magnets. Does not include magnets.

**SKU: NN1110**



**Super Magnet 12 Pack Carrier Magnets**

Griploc Magnet Carrier Holds 12 Pairs of Magnets.

**SKU: NN1115**





# T-NOZZLE

Clean top and bottom filter tracks with ease

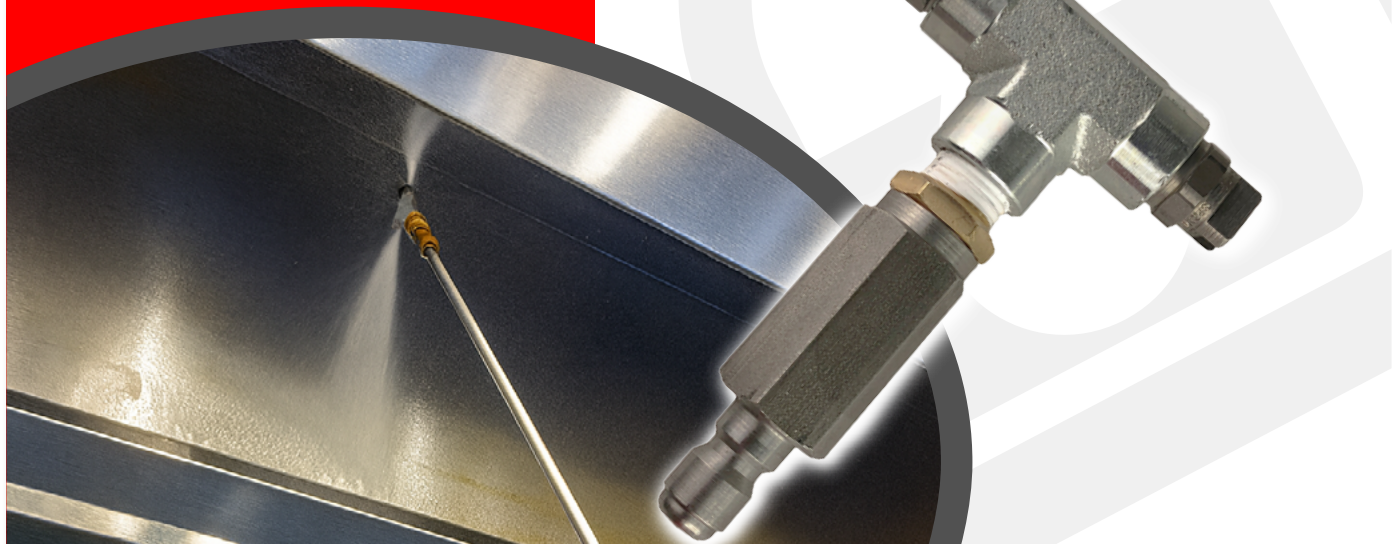
## KEY FEATURES

- Attaches Easily To Wand
- Spray Top Filter Tracks
- Spray Plenum Areas
- Zero Spray Tip To Rip
- 15 Degree Spray To Swipe
- Work Safer From The Ground

## MAXIMIZE YOUR CLEANING

Driploc's T-Nozzles are perfect for cleaning the top and bottom filter tracks.

The opposing nozzles allow you to spray your pressure wand at a 90 degree angle to get around sharp corners. You can stand on the ground and reach the tracks without crawling up in the vent.



**T-Spray Nozzle**

Specialized spray nozzle reaches tight tracks and plenum areas in kitchen vent hoods and other hard-to-clean equipment.

**SKU: NN1300**





### O'Rings Viton Brown-1/4" - 25 Per Package

Durable Viton O-rings designed for 1/4" quick couplers on pressure washers, offering a perfect seal every time.

Heat resistant up to 400°F  
Excellent chemical, tear, and abrasion resistance  
Ideal for replacing worn or damaged seals

**SKU: NN1325**



### O'Rings Viton Brown-3/8" - 25 Per Package

Durable Viton O-rings designed for 3/8" quick couplers on pressure washers, forming a reliable, long-lasting seal.

Heat resistant up to 400°F  
Excellent chemical, tear, and abrasion resistance  
Ideal for replacing worn or damaged seals

**SKU: NN1350**



### Self Tapping Screws 3/8"x1.5" (100 Count) with Nut Driver

1.25" x 3/8 Hex Head Zinc Self-Drilling Screws

100 per pack

**SKU: NN1500**



### Goodyear Hose 1.25"x3'

Durable, flexible rubber hose built for demanding service environments and reliable performance in all weather conditions.

Reinforced with 2-spiral high-tensile textile cord for strength and kink resistance  
Resists heat, sunlight, ozone, and weathering  
Stays flexible down to -40°F with a 200 PSI max rating

**SKU: NN1550**





# SOAK TANK & SOAP

Driploc's Soak Tank & Soap delivers deep filter cleaning with minimal labor — soak, rinse, repeat.

## KEY FEATURES:

- Deep soak cleaning
- Heavy-duty tank
- Labor savings
- Improves airflow & safety

## IMMERSION CLEANING

Driploc's heavy-duty 30-gallon Soak Tank makes filter cleaning simple and effective. Built from rugged polyethylene with a stainless steel rack, flush drain, and casters, it's designed for commercial kitchens. Paired with Driploc's powerful DSC soap concentrate, the system breaks down grease, clears clogged filter holes, and restores airflow—delivering cleaner filters with less scrubbing.



(877) 374-7562

INFO@DRIPLOC.COM

WWW.DRIPLOC.COM



**Soak Tank "Blue"**

Heavy-duty 30-gallon soak tank with touchless rack, casters, and fast-drain valve for safe, easy cleaning of kitchen items.

**SKU: QQ1100**



**Soak Tank DSC 7lb. Concentrate Powder**

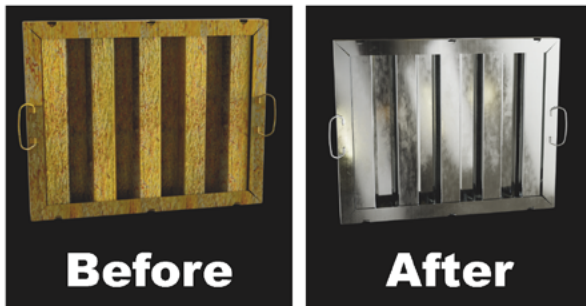
Non-corrosive concentrate tackles baked-on grease and tough soils, safe for stainless and aluminum, long-lasting in storage.

**SKU: QQ1600**



# Stop Scrubbing Start Soaking





Turn-key Soak Tank Program for Vent Hood Filters



**Dirty Vent Hood  
Filters are a Hazard**

-  Fire Risk
-  Restricted Airflow
-  Smokey Kitchens
-  Overworked Fans

**The Soak Tank Program:**

-  Properly Cleans Filters
-  Soaking Dissolves Hidden Grease
-  Clears Filter Drain Holes
-  Greatly Reduces Labor Costs



**AS LOW AS**

**\$89**

**PER MONTH**

No equipment  
to purchase

**Sign Up Today!**

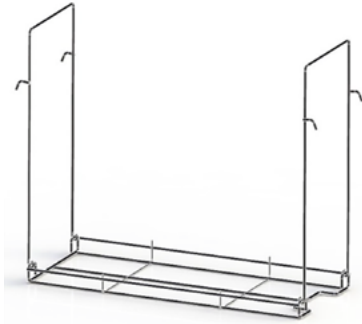
 **DRIPLOC**

**1-877-374-7562**

**www.driploc.com**

[Learn More](#)





### Soak Tank Stainless Steel Dip Rack

Stainless steel dip rack holds cookware and hood filters securely, fitting perfectly into compatible soak tanks.

**SKU: QQ1655**



### Soak Tank Caster Wheel

Non-marking castor wheel built for soaked tank mobility, supporting heavy loads and resisting corrosion in wet cleaning conditions.

**SKU: QQ1658**



### Soak Tank Rear Wheel (2 Pack)

Rear wheel for soak tanks, made for resistance and weight capacity to handle loaded tanks in wet kitchen areas.

**SKU: QQ1659**



### Soak Tank Drain Valve 3/4" M x 3/4" F

Polypropylene 2-way drain valve with Teflon and Buna seals offers chemical resistance for reliable soak tank drainage.

**SKU: QQ1665**

**SPILL  
PREVENTION  
& CLEANUP**



**Oil Only Poly Boom Filter 5"x10'**

UV-resistant absorbent boom links together to capture oil or fuel, floats when saturated, and resists snags and lint.

**SKU: CC1825**



**Oil Only Absorbent Mat - Full Roll - 150'x24"**

Durable, low-lint mat absorbs oil and fuels—not water—ideal for spills, leaks, and high-traffic areas with easy-tear perforations.

**SKU: CC2100**



**Overspray Preventer - Reusable Wash Cap 48"**

48" overspray bonnet captures grease and debris during fan cleaning, protecting rooftops, walls, and nearby equipment.

**SKU: FF1100**





**Overspray Preventer -  
Reusable Wash Cap 65"**

Overspray bonnet controls grease and debris during fan cleaning, protecting rooftops, walls, and nearby equipment.

**SKU: FF1105**



**Wash Pads - QTY 40**

Wash pads catch debris and thickened grease during fan cleaning, protecting rooftops and reducing cleanup time.

**SKU: FF1200**



**Multi-Purpose Absorbent – 3  
Cu Ft Bale (Approx. 40 lbs)**

All-natural, non-toxic absorbent that safely removes heavy rooftop grease and oil with up to 600% absorption capacity.

Water-repelling, non-abrasive, and environmentally safe

**SKU: FF1310**



**Soak Tank Drain Valve 3/4" M x  
3/4" F**

Polypropylene 2-way drain valve with Teflon and Buna seals offers chemical resistance for reliable soak tank drainage.

**SKU: FF1410**



# How to Order



# 01

## Browse & Select

Explore the catalog or website to find the grease containment systems, tools, or service programs that fit your needs.

# 02

## Create Account

Sign up online for direct purchase or apply for a distributor account to access special pricing and a dedicated order portal.

[Sign Up](#)

# 03

## Place Order

Order products or enroll in service programs with secure checkout or approved billing terms. Qualified orders may include free shipping.

# 04

## Delivery & Support

Receive your products or schedule installation. DRIPLOC provides ongoing support and easy reordering for filters, pads, and other supplies.



# Contact DRIPLLOC

Have questions or need help choosing the right product? Our team is here to assist with product details, orders, and service programs. Contact us by phone or email and we'll make sure you get the support you need.

**Phone:**

**1-877-374-7562**

**Email:**

**[info@driploc.com](mailto:info@driploc.com)**

**Website:**

**[www.driploc.com](http://www.driploc.com)**

**Address:**

4100 Will Rogers Parkway, Ste 1000  
Oklahoma City, OK 73108

**Reach Out For:**

- Product questions
- Distributor or bulk order inquiries
- Service & program support
- Net 30 / billing terms



**@driploc**



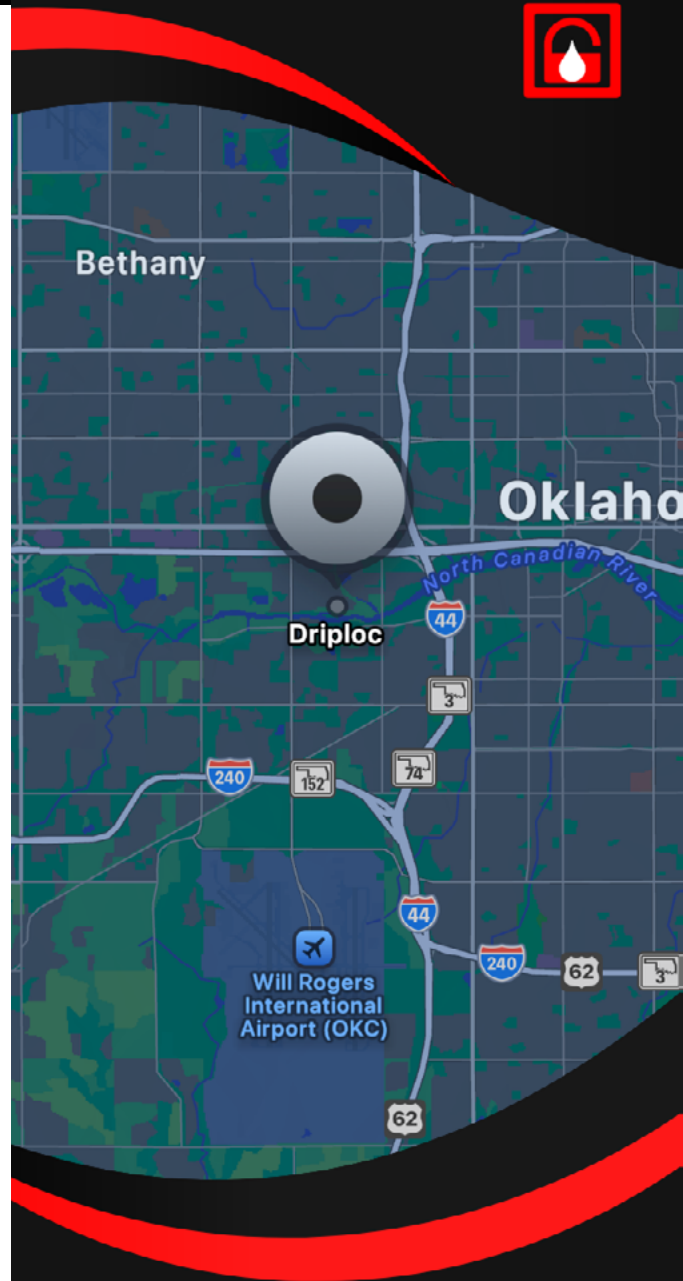
**@driploc**



**@driplocllc**



**@driplocllc**



**WWW.DRIPLLOC.COM**



# Index

## Access Panel

Dual Seal Access Panel (LL1200) – p.29

## Adapters & Drain Components

Adapter, Horizontal Drain (DD1100 / DD1200) – p.13

Adapter, Vertical Drain (DD1300) – p.14

Chimney Rod Adapter Fitting, Stinger (AA1690) – p.10

Drain Adapter, Fan 12" (DD1405) – p.14

Drain Adapter, Fan 45° (DD1415) – p.14

Drain Adapter, Fan 90° (DD1410) – p.14

## Chains & Safety Hardware

Safety Chain, 3' (20 Pack) (JJ1450) – p.17

Safety Lift Handles, "S" Exhaust Fan (JJ1650) – p.17

## Cleaning Tools & Duct Cleaners

Mini Spinner (AA1500) – p.8

Mini Spinner Wash Arm 16" (AA1575) – p.9

STINGER 3" Variable Speed Duct Cleaner (AA1200) – p.5

STINGER 3" Variable Speed Duct Cleaner w/ 20' Hose (AA1210) – p.4

STINGER 6" Variable Speed Duct Cleaner (AA1100) – p.3

STINGER 6" Variable Speed Duct Cleaner w/ 20' Hose (AA1110) – p.3

## Combo Packs

STINGER Duct Cleaner Combo Pack (AA0900) – p.3

STINGER Ultimate Hood Cleaning Combo Pack (AA0800) – p.3

Type 1S Exhaust Fan Hinge & Model-S Safety Handle Combo (JJ1750) – p.17

## Grease Containment Systems

Low Volume Grease Containment System (BB1100) – p.18

4" Grease Containment System (BB1200) – p.18

4" Grease Containment System – No Filters (BB1205) – p.18

7" Grease Containment System (BB1300) – p.18

7" Grease Containment System – No Filters (BB1305) – p.18

Supreme Grease Containment System (BB1400) – p.19

Supreme Curb Mounting Bracket (BB1405) – p.19

360 Grease Containment System – Model #4424 (BB1500) – p.19

360 Grease Containment System – Model #4424/27-65 (BB1550) – p.19

360 Grease Containment System – Model #3312/16-41 (BB1575) – p.19

360 Deflector System Kit (BB1595) – p.20

Drip Edge 360 System – Model #1832 (BB1600) – p.21

Drip Edge 360 System – Model #3250 (BB1605) – p.21

Deluxe Wall Mount Grease Containment System (BB1700) – p.21

Econo Wall Mount Grease Containment System (BB1800) – p.22

# Index

## Filters & Absorbents

- Oil Only Sphag Pillow Standard Filter (CC1000) – p.24
- Oil Only Sphag Pillow Low Volume Filter (CC1100) – p.24
- Superwash Oil Only Poly 12"×18" Filter (CC1025) – p.24
- Standard Filter 12"×18" Self-Extinguishing Topper (CC1050) – p.24
- RT 360 Filter 24"×58" (CC1200) – p.24
- RT 360 Filter 24"×58" Self-Extinguishing Topper (CC1210) – p.24
- RT 360 Filter (2) 12"×58" (CC1250) – p.25
- RT 360 Filter 12"×58" Self-Extinguishing Topper (CC1260) – p.25
- Drip Edge 360 Filter 4"×54" (CC1275) – p.25
- "Gutter Style" Oil-Only Lay-Flat Sphag Filter (CC1300) – p.25
- Supreme Oil-Only Sphag Filter (CC1600) – p.26
- Oil-Only Pail Filter (CC1700) – p.26

## Hinges & Fan Hardware

- Type 1S Exhaust Fan Hinge Kit (JJ1205) – p.15
- Type 2S Exhaust Fan Hinge Kit (JJ1405) – p.16
- Type 2S Hinge Upper Assembly Kit (JJ1407) – p.16

## Hoses & Plumbing

- Pressure Wash Hose, Single Wire Gray 50' (AA1775) – p.10
- Pressure Wash Hose, Double Wire Gray 50' Non-Marking (AA1780) – p.12
- Stiff Double-Wire Hose w/ In-Line Screen Quick Connect (AA1425 / AA1430) – p.8
- Goodyear Hose 1.25" × 3' (NN1550) – p.33

## Magnets & Accessories

- Griploc Super Magnets (NN1100) – p.30
- Super Magnet 12-Pack Carrier (NN1115) – p.31
- Super Magnet 8-Pack Carrier (NN1110) – p.31

## Replacement Parts & Small Components

- Banjo Bolt Kit, Stinger Duct Cleaner Head (AA1325) – p.8
- Copper Washer, 10-Pack (AA1330) – p.8
- Swivel Seal / Nozzle Replacement Kit (AA1310) – p.6
- Wash Arm Head, Stinger (AA1321) – p.6
- Wash Arm Set, Stinger 3" (AA1322) – p.6
- Wash Arm Set, Stinger 6" (AA1323) – p.7
- Head Speed Setter Tool, Stinger (AA1250) – p.5

## Spill Prevention & Cleanup

- Overspray Preventer Wash Cap 48" (FF1100) – p.37
- Overspray Preventer Wash Cap 65" (FF1105) – p.38
- Wash Pads – QTY 40 (FF1200) – p.38
- Multi-Purpose Absorbent Bale (FF1310) – p.38

## Soak Tanks & Soap

- Soak Tank (30-Gallon) (QQ1100) – p.34
- Soak Tank Concentrate Powder, DSC 7 lb (QQ1600) – p.34
- Soak Tank Caster Wheel (QQ1658) – p.35
- Soak Tank Rear Wheel (QQ1659) – p.35
- Soak Tank Stainless Steel Dip Rack (QQ1655) – p.35
- Soak Tank Drain Valve 3/4" M × 3/4" F (QQ1665) – p.35



**1-877-DRIPLLOC**  
**WWW.DRIPLLOC.COM**



**4100 Will Rogers Pkwy # 1000,  
Oklahoma City, OK 73108**